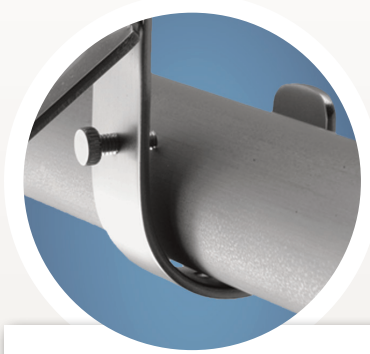


## WE SPECIALIZE IN QUALITY

By installing **LIDO** hardware you ensure that your closet is equipped with components that look great and stand the test of time.



**Our Unique SET SCREW provides added stability and PEACE OF MIND**



\*New Oil Rubbed Bronze Reeded Rod

**Our rods are made from INDUSTRIAL GRADE BRASS & STAINLESS STEEL**

### Premium Closet Hardware

		Polished Chrome	Brushed Nickel	Brushed Stainless Steel	Polished Brass Finish	White	Oil Rubbed Bronze
A106/6	<b>Closet Rod</b> Heavy Weight 1-5/16" Diameter. 6' length	<input type="radio"/>	<input type="radio"/>	<input type="radio"/>	<input type="radio"/>	<input type="radio"/>	<input type="radio"/>
A106/8	<b>Closet Rod</b> Heavy Weight 1-5/16" Diameter. 8' length	<input type="radio"/>	<input type="radio"/>	<input type="radio"/>	<input type="radio"/>	<input type="radio"/>	<input type="radio"/>
505 Set	<b>Flange Set</b> Die Cast. Accepts 1-5/16" Rod or Dowel. 1 open, 1 closed/set.	<input type="radio"/>	<input type="radio"/>	<input type="radio"/>	<input type="radio"/>	<input type="radio"/>	<input type="radio"/>
8150	<b>Rod &amp; Shelf Bracket</b> Heavy weight. Accepts up to 1 1/2" Rod & Shelf up to 12" deep.	<input type="radio"/>	<input type="radio"/>	<input type="radio"/>	<input type="radio"/>	<input type="radio"/>	<input type="radio"/>
601PR	<b>Snap-In End Cap Pair</b> Steel construction. Fits rods up to 1 1/2" internal Diameter.	<input type="radio"/>	<input type="radio"/>	<input type="radio"/>	<input type="radio"/>	<input type="radio"/>	<input type="radio"/>

### EXTEND & LOCK Rods *Patent Pending*

D103/4872	<b>Deluxe Closet Rod</b> Fits closets 48"-72"	<input type="radio"/>	<input type="radio"/>	<input type="radio"/>	<input type="radio"/>	<input type="radio"/>	<input type="radio"/>
E103/2030	<b>Extendable Closet Rod</b> Fits closets 20"-30"	<input type="radio"/>	<input type="radio"/>	<input type="radio"/>	<input type="radio"/>	<input type="radio"/>	<input type="radio"/>
E103/3048	<b>Extendable Closet Rod</b> Fits closets 30"-48"	<input type="radio"/>	<input type="radio"/>	<input type="radio"/>	<input type="radio"/>	<input type="radio"/>	<input type="radio"/>
E103/4872	<b>Extendable Closet Rod</b> Fits closets 48"-72"	<input type="radio"/>	<input type="radio"/>	<input type="radio"/>	<input type="radio"/>	<input type="radio"/>	<input type="radio"/>
E103/72120	<b>Extendable Closet Rod</b> Fits closets 72"-120"	<input type="radio"/>	<input type="radio"/>	<input type="radio"/>	<input type="radio"/>	<input type="radio"/>	<input type="radio"/>



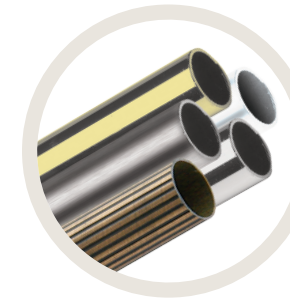
LB-00207R2

50 Miry Brook Road, Danbury, CT 06810  
CALL TOLL FREE: 877.259.LIDO • FAX: 661.295.8383  
EMAIL: sales@lidadesigns.com

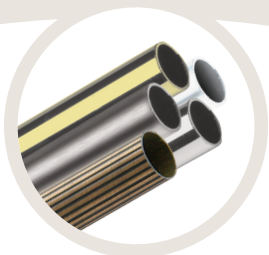
© 2012 LIDO Designs. All Rights Reserved.



## LIDO Designs® HEAVY DUTY CLOSET HARDWARE



**LIDO DESIGNS** PREMIUM  
**CLOSET HARDWARE**



**Closet Rods**  
 A106/6-8



**Snap-In End Cap**  
 601PR



**Flange Set**  
 505 Set



**Shelf & Rod Bracket**  
 8150

High-quality, heavy-duty, premium finishes complement any decor & cut-to-length rods create a custom fit in virtually any closet.

**Simple** installation  
**Dramatic** results

Your closet should reflect the care you have taken to decorate your home and select your wardrobe.

Whether your motif is classic or contemporary, you will find a finish that compliments it perfectly.

Create a showcase closet with **LIDO Designs** today!

50 Miry Brook Road, Danbury, CT 06810  
 CALL TOLL FREE: 877.259.LIDO • FAX: 661.295.8383  
 EMAIL: sales@lidadesigns.com

**LIDO DESIGNS** EXTEND & LOCK  
**CLOSET RODS**



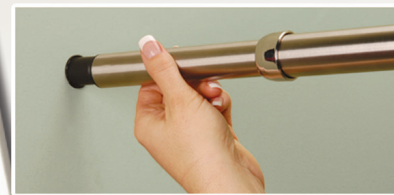
**Extend & Lock Rods** are more secure than tension rods and just as easy to install.

Installs in minutes and requires **NO CUTTING**.

Simply install supports, position the **Extend & Lock Rod** and twist to lock securely in place.

All mounting hardware included.

*Extend & Lock Rods*



*Deluxe Extend & Lock Rods*

*Patent Pending*